

# Help a Child DRC

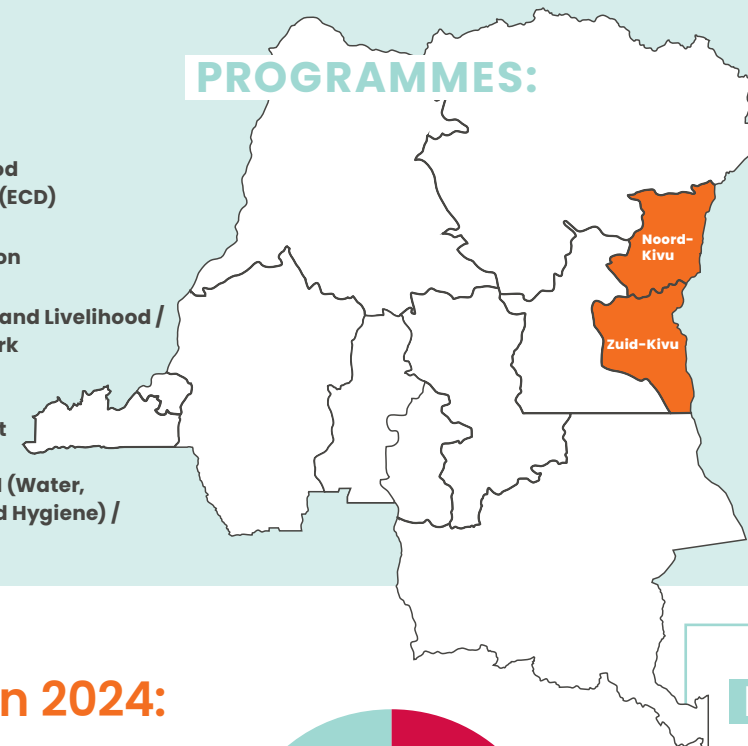


Help a Child DRC has a strong position in Child Protection and Early Childhood Development (ECD). Our ambition is to become a lead in Child Protection, ECD and SGBV for North and South Kivu.

## FOCUS:

-  Early Childhood Development (ECD)
-  Child Protection
-  Food Security and Livelihood / Youth and Work
-  Community Empowerment
-  Health / WASH (Water, Sanitation and Hygiene) / Nutrition

## PROGRAMMES:



## RUNNING PROGRAMMES:

- **Joint Response**, WASH, FSL and Protection, 2024–2026, € 3.52 million
- **Kids@Risk**, Protection, 2024–2026, € 512,000
- **Tunafasi**, Disability Prevention and Community Based Rehabilitation Interventions, 2022–2024. € 104,000
- **Emergency Response Eastern DRC**, E2P and Child protection, 2023–2024, €978,000
- **Emergency Response Eastern DRC**, E2P and Child protection, 2024–2025, € 1,24 million
- **Integrated Emergency Response**, E2P and Child protection, 2024, € 1.13 million
- **Facilitation of inclusive education**, 2023–2025, € 875,000

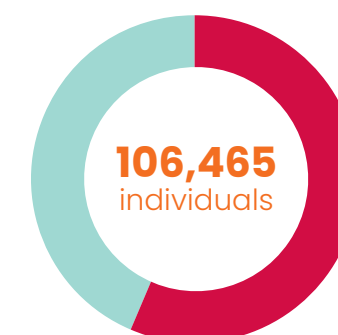
## We make impact with:

- Child Protection and Child Friendly Spaces
- Sexual Gender Based Violence (SGBV)
- ECD in emergencies
- Food Security & Livelihoods as a fundamental element for ECD

➤ For information about our projects in DRC, please refer to pages 43, 44, 45 and 60.

## Supported in 2024:

- **60,093 children** (< 18 years) in disaster response programmes
- **46,372 adults** (> 18 years) in disaster response programmes



**4,024 children** that received support specific to their needs

**524** children with disability reached

**5,891** people reached with FSL interventions

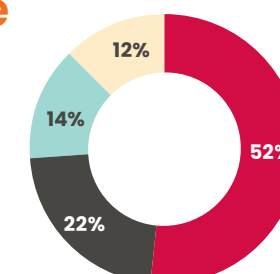
**13,386** people reached with Education interventions

**72,428** people reached with Protection interventions

**31,781** people reached with WASH interventions

## Expenditure per expertise area in 2024:

- Child Development & Protection
- Youth & Work
- Community Resilience
- Food Security and Livelihoods
- Health, Wash & Nutrition



## DONORS:

- **Dutch ministry of Foreign Affairs – Dutch Relief Alliance**
- **ECHO**
- **USAID–BHA with Medair**
- **UNICEF**
- **Impaction**



## IMPLEMENTING PARTNERS:

- **ADED** (Appui au Développement de l'Enfant en Détresse)
- **Help Channel Congo**
- **FECONDE** (Femme Congolaise pour le Développement)

