



The program trains Community Facilitators to be able to offer this parenting education to parents in a participatory way. Group leaders are facilitating the discussions rather than giving instructions only and promote participant sharing own thoughts and ideas. In this way the process of internalization is strong and touches besides knowledge also on attitudes and practices.

### 3. Increased collaboration and support from stakeholders to improve ECD in a sustainable way

Early Childhood Development is a development and child rights issue. The primary right holder being the child and the primary duty bearer being the government. For this reason, this program works with and endeavor to strengthen the efforts of the Government of Malawi. This is done both at national, district and local levels with the various government ministries including the Ministry of Gender, Children, Disability and Social Welfare, Ministry of Education, Ministry of Health and Ministry of Agriculture. The program promotes increased networking and collaboration of these different players

At community level, the program engages traditional leaders like chiefs and religious leaders to ensure that the agenda of early childhood development will continue to remain the agenda for the community even after the program has been phased out. It also aims to empower the communities to advocate for quality ECD services.

The program will document the program results, lessons learned and good practices in order to promote the adoption of these models and to contribute to the strengthening of the ECD sector. In this way the program aims to contribute and advocate for increased investment and professionalization of the ECD sector in Malawi.

## Partner Organizations and Geographical Focus

Help a Child Malawi works in partnership with local civil society organizations in the implementation of programs.

Our partners in the ECD program are



Livingstonia Synod Aids Program (LISAP)



Word Alive Commission for Relief and Development (WACRAD)



## Want to know more? Contact us!

### Help a Child Malawi:

Country Program Director  
 P.O. Box 31800, Lilongwe  
 Area 5 Manobec Complex,  
 along Kamuzu Procession Road (on top of 7/11 supermarket)  
[info@hacmalawi.org](mailto:info@hacmalawi.org)  
[www.hacmalawi.org](http://www.hacmalawi.org)  
[www.facebook.com/hacmalawi](https://www.facebook.com/hacmalawi)



# Early Childhood Development Program: 2016-2020

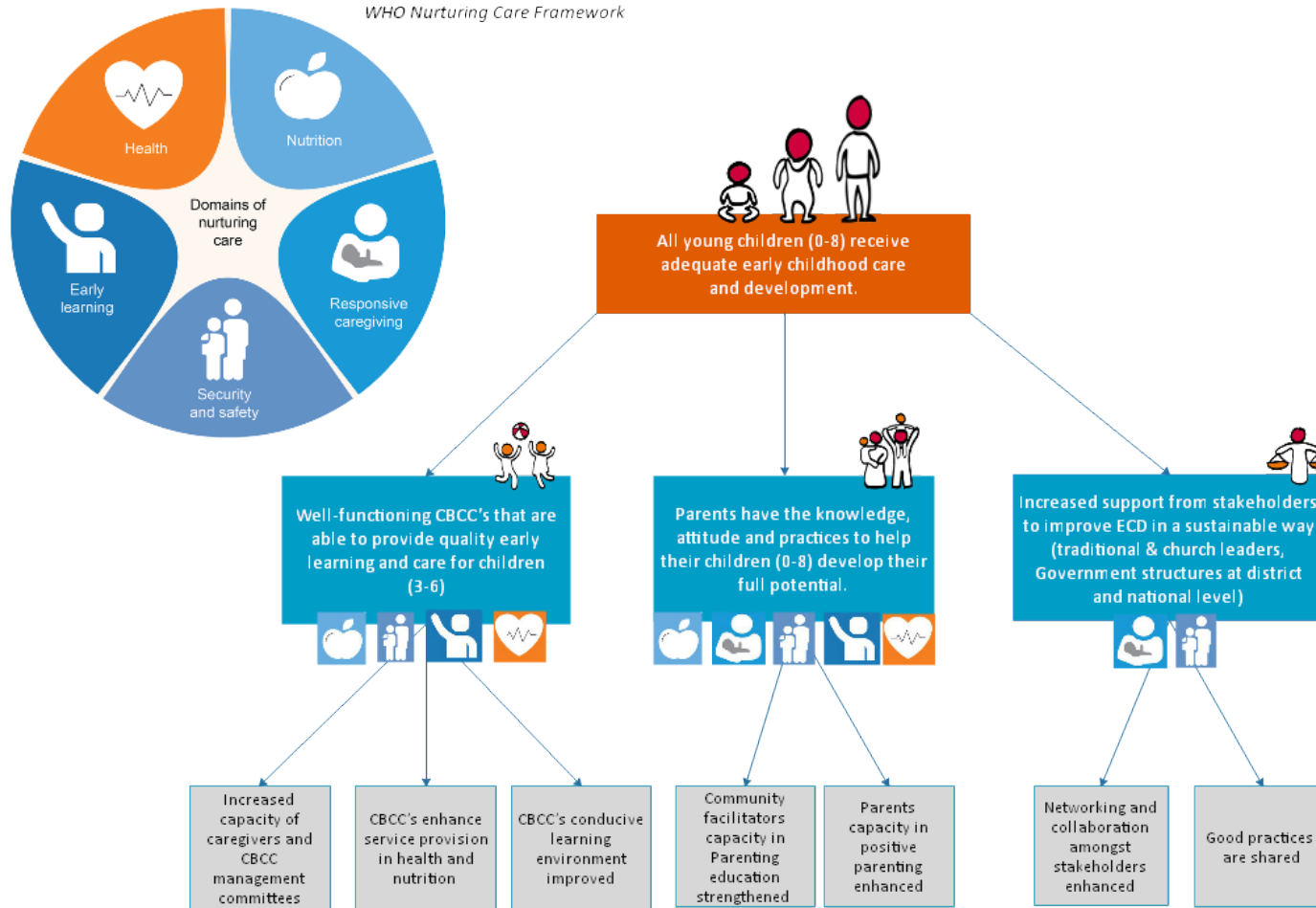
### Our Mission:

*Help a Child provides a future for children in need, their family and their entire community.*

### Our Vision:

*As a Christian non-profit organization, Help a Child wants every child -regardless of their social, political, religious, ethnic or economic background -to have a life in dignity, with love and with a promising future.*

WHO Nurturing Care Framework



## Goal of the ECD Program:

The strategic goal of HAC Malawi ECD Program is that all young children (0-8) receive adequate early childhood care and development.

To achieve this goal, Help a Child's Program program works towards the following outcomes

**1. Well functioning Community based Child Care Centres (CBCC's) that are able to provide quality early learning and care for children.**

**2. Parents have the Knowledge Attitudes and Practices to help their children develop their full potential.**

**3. Increased collaboration and support from stakeholders to improve ECD services in a sustainable way.**

This is in line with the Nurturing Care Framework (WHO, 2018) which promotes a holistic approach in Early Childhood Development. For a child to grow up well it must be healthy, must have good nutrition, responsive care and security and safety. Every child must be well stimulated to facilitate good early learning.

## 1. Well-functioning Community Based Child care Centers (CBCCs)

Help a Child Malawi's ECD program is based on the Community Based Child Care (CBCC) model which is also the promoted model by the government of Malawi. This means that communities themselves are in the forefront setting up and running the ECD centers. To ensure that CBCC centres are able to provide quality early learning and care for children, the program main focus is on building the capacity of Caregivers and CBCC Management committees through trainings, mentorship, exchange visits and supervision. Capacity building equips caregivers to handle young children, promote good health and nutrition, make toys for early stimulation and learning as well as being inclusive for children with disabilities.

Help a Child Malawi also supports the CBCC's to be able to provide health and nutrition services for the children. This is done by through Community CBCC gardens and contributions of maize, soya and other food items from community members. The program stimulates linkages with the health centres and ensures that growth monitoring takes place in CBCC's in order to track children's health and nutrition.

The program supports CBCCs in creating a conducive learning environment for children to learn. CBCC management committees are trained and coached in their process to mobilize and lobby for resources to improve CBCC's infrastructure and are supported with building materials to complement their own efforts. Centres are also supported to construct outdoor play parks from locally available materials.

## 2. Parents have the Knowledge, Attitude and Practices to help children develop to their fullest potential

Parents, (biological or not) are the primary caregivers and therefore very important for children's optimal development. Help a Child Malawi is implementing a parenting program with the aim of ensuring that children receive optimal nurturing care the first 1000 days of their lives and beyond. This is done through a Parenting Program called 'The parenting Challenge'. The Parenting Challenges Modules are designed in a way that ensures interactive discussions and role-plays to teach parents on topics such as child health, nutrition, education, importance of play, child safety and security and positive disciplining.